

RIANA YACHT

CUSTOM-BUILT MOTOR
SAILING YACHT



NAME	Riana Yacht	LOA	42m
BUILDER	Silyon Yachts	BEAM	8.45m
DESIGNER	Roberto Scalvini	DRAFT	4.20m
YEAR/REFIT	2007 2022 – 2025	GROSS TONNAGE	220GT
GUESTS/CREW	10 Guests 7 Crew	ENGINES	2 X 500 HP MAN
CABINS	2 x Master 2 x Twin 1 x Double	LOCATION	Adriatic / Mediterranean

PRICE

€ 8,850,000 EU Import Duty and VAT Exempt
Registered and Operated as a Commercial Charter Yacht under the Malta Flag

The price given may be subject to VAT or local taxes.

PALMA | VIENNA | DUBAI | MONTENEGRO

Stephan Kohl
+34 651 350018
stephan@iconyachting.me
iconyachting.me

DUBAI | MONTENEGRO

Romy Hawatt
+44 (0) 7788 200528
romy@rianagroup.com
rianayacht.com



RIANA
RIANAYACHT.COM



Riana's commanding presence under sail is matched only by her craftsmanship — a custom-designed yacht with a handcrafted mahogany and epoxy-coated hull and a finely finished mahogany superstructure. With sails spanning over 800 square metres, she glides effortlessly across the water with both power and grace.







From her sweeping teak decks aft to the sculpted bowsprit forward, Riana embodies balance, grace and timeless craftsmanship — a yacht as exquisite at anchor as she is under sail.





Designed for effortless living at sea, Riana's teak-lined decks include an elegant aft dining area and a 95 m² flybridge with bar, BBQ and expansive seating — offering an exceptional balance of open-air luxury and panoramic views under sail.





Riana's main saloon blends formal dining, an elegant bar and relaxed lounge seating. Rich mahogany finishes and soft lighting create an inviting, refined ambience throughout.





RIANA YACHT

TWIN CABINS

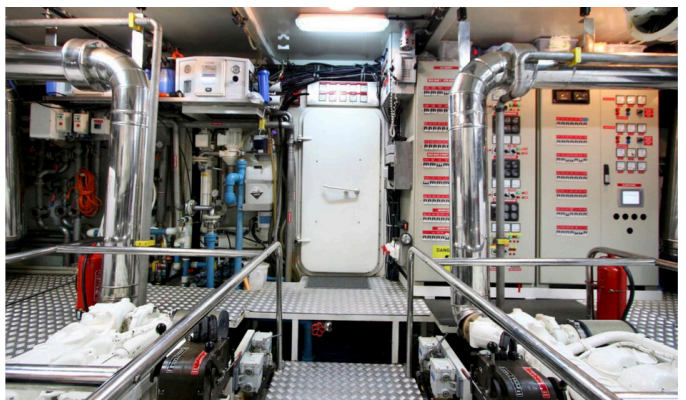
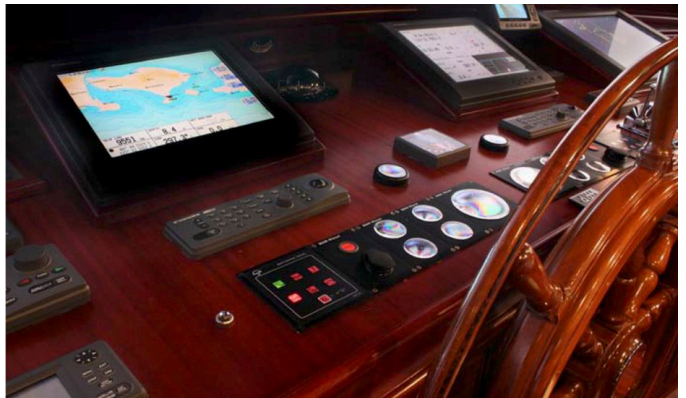
2 TWIN CABINS
WITH ENSUITE
BATHROOMS



RIANA YACHT

CAPTAIN AND
CREW QUARTERS

WHEELHOUSE
CREW MESS / GALLEY
ENGINE ROOM



WHEELHOUSE

The wheelhouse offers direct access from both sides of the main deck and from the captain's cabin. Equipped with modern integrated navigation and communication systems, it combines classic design with professional functionality, featuring a dedicated operations desk and ample chart storage.

CREW QUARTERS & GALLEY

Located aft, the crew area features three double en-suite cabins and a comfortable mess. The captain's cabin adjoins the wheelhouse for convenience. Opposite the crew mess, the fully equipped galley includes a dumb waiter to the saloon and flybridge, walk-in cool room, twin freezers, and comprehensive laundry facilities — ensuring efficient, discreet service.

ENGINE ROOM

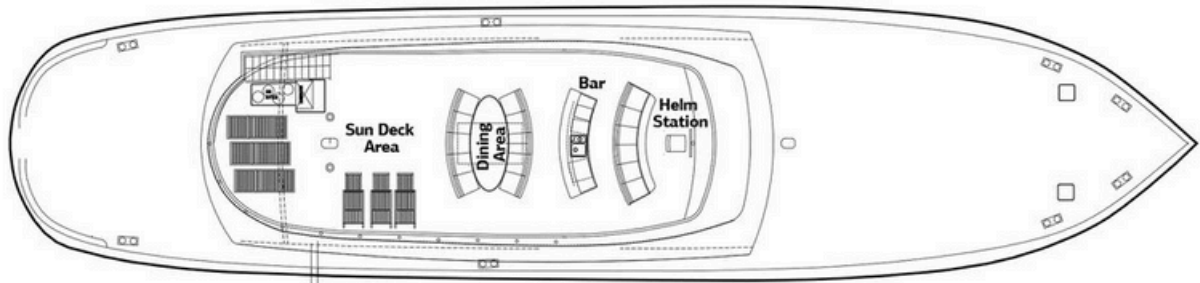
Accessed via the crew area, the large insulated engine room is meticulously maintained and presented to commercial standards, reflecting Riana's engineering integrity and consistent technical upkeep.

rianayacht.com

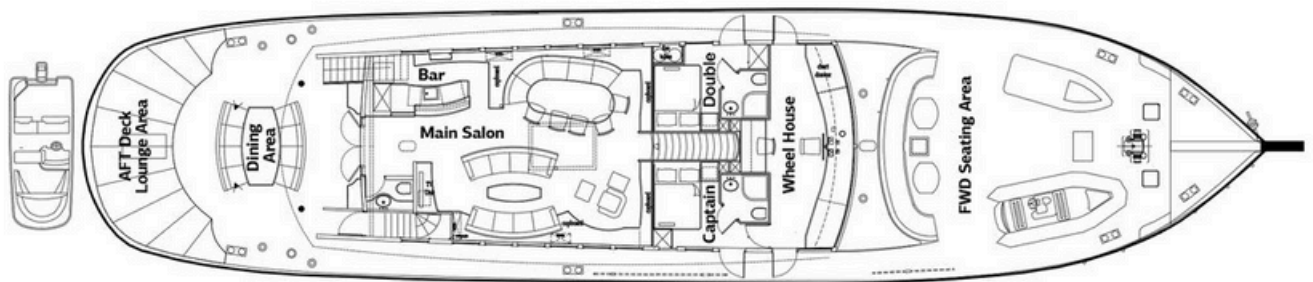




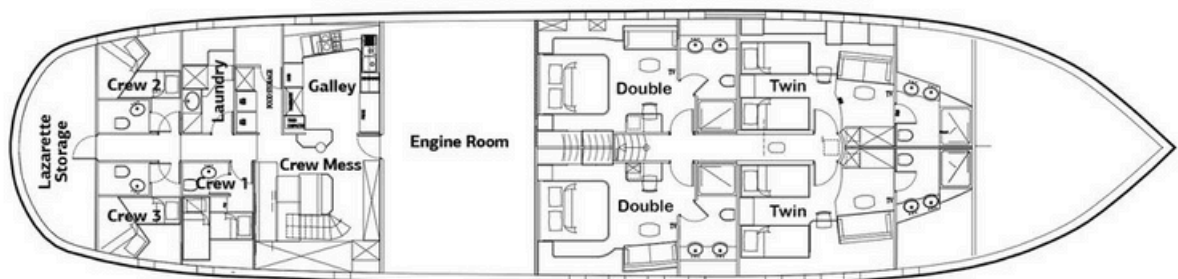




Flybridge Plan



Main Deck Plan



Lower Deck Plan

RIANA YACHT

SPECIFICATIONS OVERVIEW

Built by Silyon Yachts and designed by Roberto Scalvini, Riana is a 42-metre classic motor-sailing yacht that combines timeless craftsmanship with modern engineering.

Her hull is handcrafted from mahogany and epoxy-coated for exceptional strength and durability, complemented by a finely finished mahogany superstructure and expansive teak decks.

Following a full interior refit in 2022 and major technical refurbishments in 2025, Riana presents in immaculate condition, fully compliant with her RINA 100-A-1.1 Y Commercial classification.

DIMENSIONS & BUILD

Length Overall: 42.00 m (138 ft)

Beam: 8.45 m

Draft: 4.20 m

Gross Tonnage: 220 GT

Construction: Cold-moulded mahogany hull, epoxy-laminated, teak decks

Rig: Ketch rig with aluminium masts and twin headsails

Flag: Malta

PERFORMANCE & MACHINERY

Engines: 2 × MAN 500 HP diesel

Cruising Speed: 10 knots

Range: 800+ nautical miles

Generators: 3 × Kohler (40 kW, 40 kW, 17.5 kW)

Air Conditioning: Central tropical system, 180,000 BTU

ACCOMMODATION

8 – 10 guests in 4 ensuite cabins + 1 additional double cabin (adjacent to wheelhouse)

7 crew in 3 twin cabins + captain's cabin

TANK CAPACITIES

Fuel: 9,000 L

Fresh Water: 9,000 L

RIANA YACHT

KEY FEATURES & REFIT SUMMARY

KEY FEATURES

- Handcrafted mahogany and epoxy-coated hull with classic ketch rig
 - Over **800 m²** of sails for powerful, elegant performance
 - Expansive flybridge with wet bar, BBQ and dining for up to ten guests
 - Aft deck designed for open-air dining and relaxed entertaining
 - Warm, richly detailed mahogany interiors with beamed ceilings and bespoke furnishings
 - Four generous guest cabins with ensuite bathrooms plus additional double cabin
 - Professional galley and crew areas enabling discreet five-star service
 - Latest navigation, control and monitoring systems with night-vision and CCTV integration
 - Maintained to full commercial standards for global reliability
-

REFIT & MAINTENANCE SUMMARY

2022 – Interior Refit

Complete interior redesign, including new furnishings, soft finishes, lighting, and upgrades to guest and crew areas.

2025 – Technical Refurbishments & Survey

Comprehensive overhaul of engineering systems, electronics, safety equipment, and structural maintenance.

Full Five-Year Commercial Survey successfully completed, ensuring compliance and operational readiness.

Riana continues to be maintained under an active professional programme, ensuring her condition and systems remain exemplary.



RIANA YACHT

ACQUISITION DETAILS

Riana represents a rare opportunity to acquire a truly unique luxury motor-sailing yacht — a fusion of elegant design, robust craftsmanship and modern performance. Her recent refit, survey and meticulous maintenance make her an outstanding turnkey option for private or commercial ownership.

ASKING PRICE

€ 8,850,000 (EU VAT Paid)

The price given may be subject to VAT or local taxes.

All particulars are provided in good faith and are believed to be correct but are not guaranteed. They do not constitute or form part of any offer or contract. Measurements, capacities and inventories are provided for guidance only and may be subject to change without notice. The vessel is offered subject to prior sale, price change, or withdrawal without notice.



